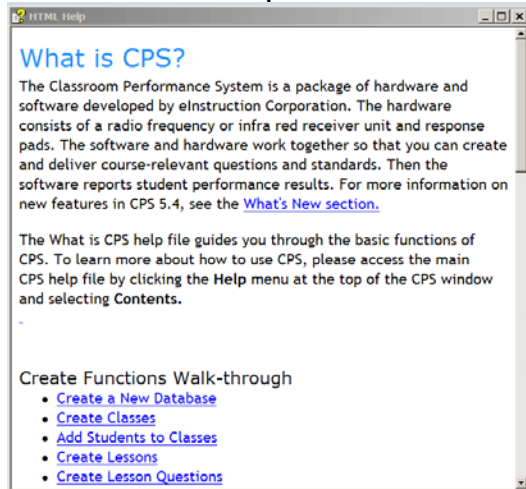


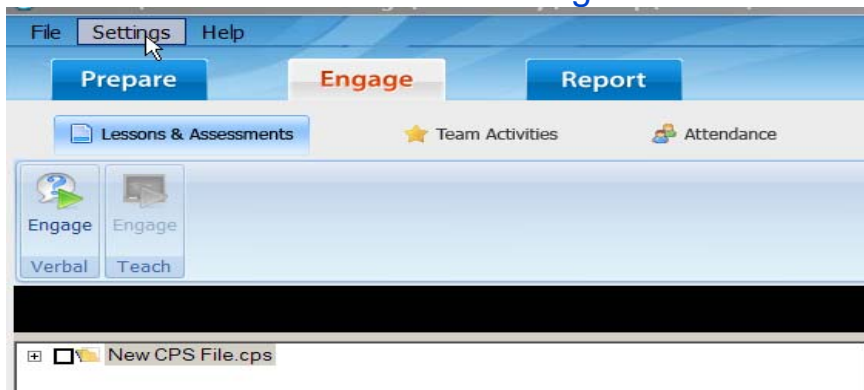
Checking or Changing the Channel for the Receiver

1. Open the CPS software 

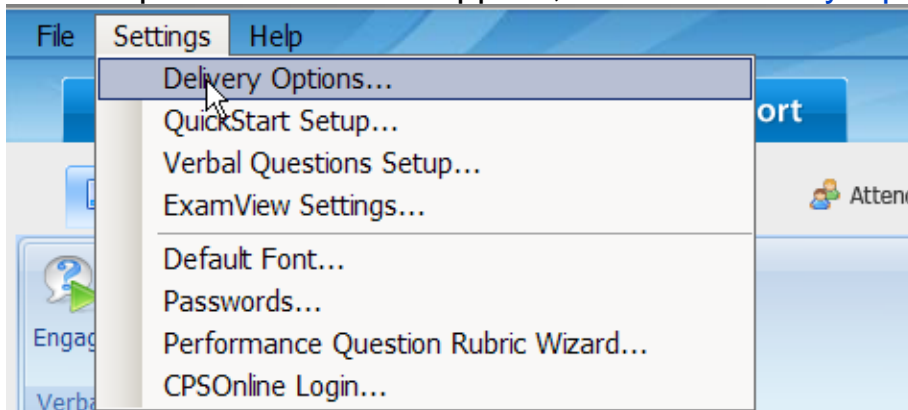
2. Close the Help box



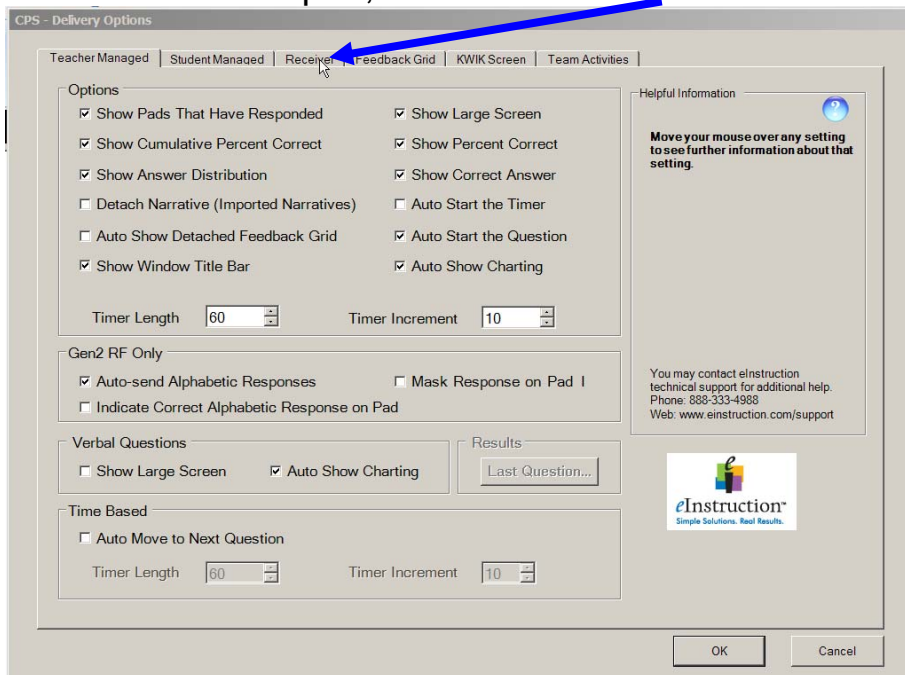
3. On the menu bar click on Settings



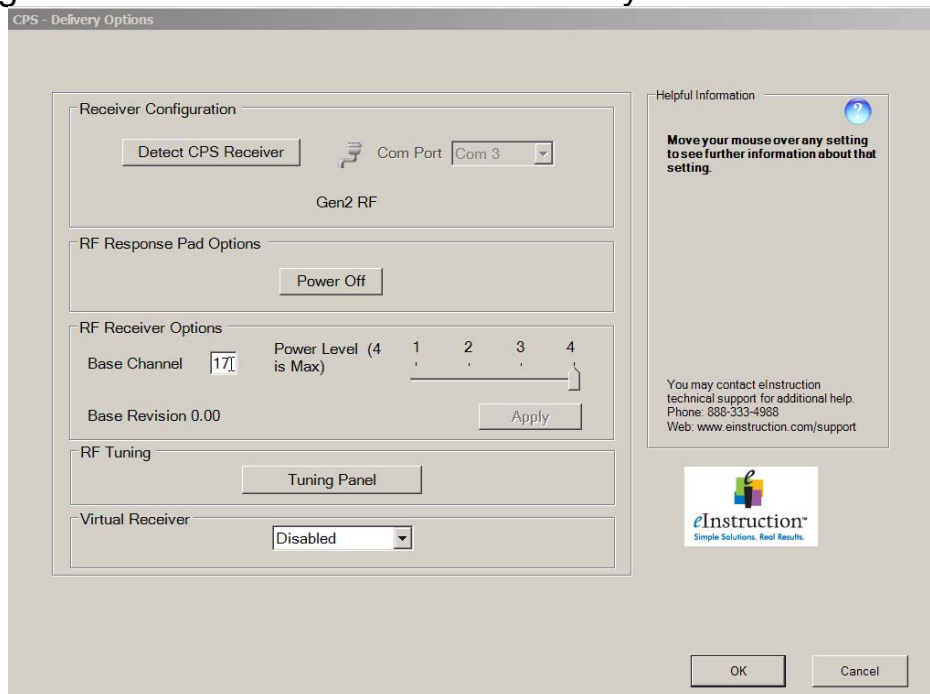
4. A drop down menu will appear, click on Delivery Options



5. A window will open, select the **Receiver** tab



6. The window will open, find the **RF Receiver Options, Base Channel** box...Change the number either match the tag on your bag of clicker or to another channel that you select.



After changing the channel, click on **Apply** and then **OK**.